

Tandus

Geologic Structure: Grid & Granite

MODULAR CARPET

Textured
loop piles
for true
comfort

 **Tarkett**

Geologic Structure Series

We observe an increasing fluidity between the workplace and the leisure spaces. Workplace needs to be modular and to adapt to different sizes of groups and multi-purpose activities.

Geologic Structure series introduces an organic visual texture that responds to this need for less specific interior surfaces. The biomimicry of the rocks and stone bring a sense of wellness and calm.

Grid collection presents textured geometric shapes, inspired by the formations visible in raw slate or marble.

Granite collection is directly inspired by the pattern of the Granit rock, reproducing the light-colored igneous rock with contrasted grains.

Geologic Structure's color palette is comprised of warm and cool neutrals in light, medium and dark tones, providing a diverse range of color-shifting options. The palette also includes accents of yellow, red, pink, green, and blue tones to remind us the beautiful colors of the Danxia landform.



Grid CLAY 6301034001 Tile 50 x 50 cm Vertical Ashlar Installation

Geologic Structure Series

Grid & Granite

Both collections include a variety of colours that could be observed in the unique landscape of the Danxia landform.



The raw, unpredictable textures of the rocks



Granite AUGEN 631044004 / CLAY 631044001 / FLINT 631044005 Tile 50 x 50 cm Vertical Ashlar Installation

A broad palette for creative workplace



iD Essential ORIGINAL SLATE BLACK 3979006 Tile 30.5 x 61 cm Vertical Ashlar Installation
Grid CITRON 631034007 Tile 50 x 50 cm Vertical Ashlar Installation

High level loops to bring texture and comfort



Granite ROOTSOIL 631044003 Tile 50 x 50 cm Vertical Ashlar Installation

As once disparate segments continue to blend and influence each other, commercial spaces deliver a variety of functions and services for the people who live and work in them every day. The hospitality industry, for example, has lent a sense of luxury and 'at home' comfort to workplace and healthcare settings. Corporate headquarters and hotels are now offering a comprehensive suite of amenities — from wellness services to open cafés and lounge areas to rooftop gardens — creating an entire community within a single building. As the needs for these spaces grow and shift, so do our patterns for the floor.



Grid CITRON 631034007 Tile 50 x 50 cm Vertical Ashlar Installation

Reminding the coloured Danxia mountain



Grid POPPY 631034011 Tile 50 x 50 cm/ Granite SHELL 631044019 Tile 50 x 50 cm Vertical Ashlar Installation

You are unique and so is your project!



Granite ROOTSOIL 631044003 Tile 50 x 50 cm Vertical Ashlar Installation

Customization example

Select your carpet & change easily the accent colour for only 60sqm!



Minimum order = **60 sqm only** if for standard pattern and standard colour yarn

Sample available **within 2 weeks**

Production done in **2-4 weeks**

Change of colour!

Our carpet designs made from our library of yarn colours can be customized with the yarn colours of your choice. Select among our + 70 standard yarns available and create your unique carpet with minimum order of only 60 sqm! For non-standard yarns, the minimum order is 1,000 sqm.

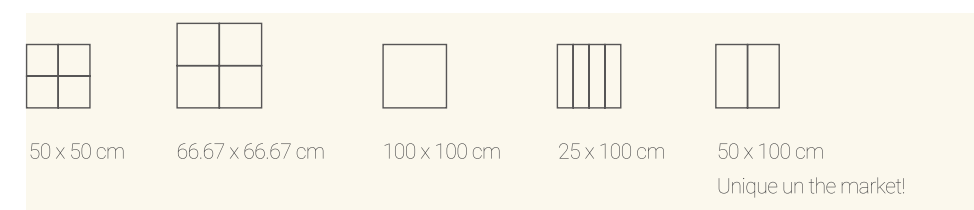
Create custom pattern!

Add signature images to your flooring design, such as company logos, school mascots, government seals and more.

These customized emblems let you use every plane of the interior space to create a unique experience and communicate a client's valuable brand message.

Change of format!

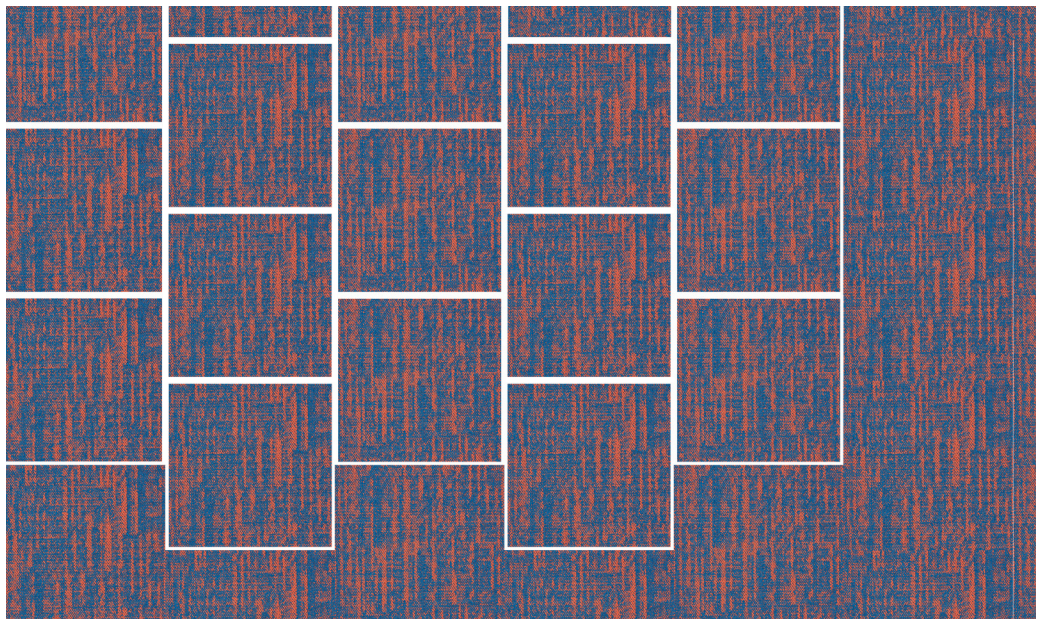
We can easily produce in 5 formats all products with minimum order of only 60 sqm per product with no surcharge!



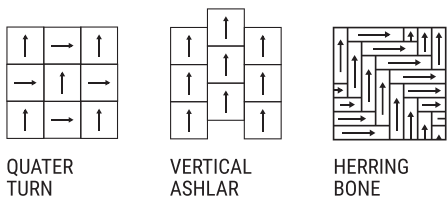
Tile 50 x 50 cm



Granite CLAY 631044001 / AUGEN 631044004 / FLINT 631044005 Tile 50 x 50 cm Vertical Ashlar Installation



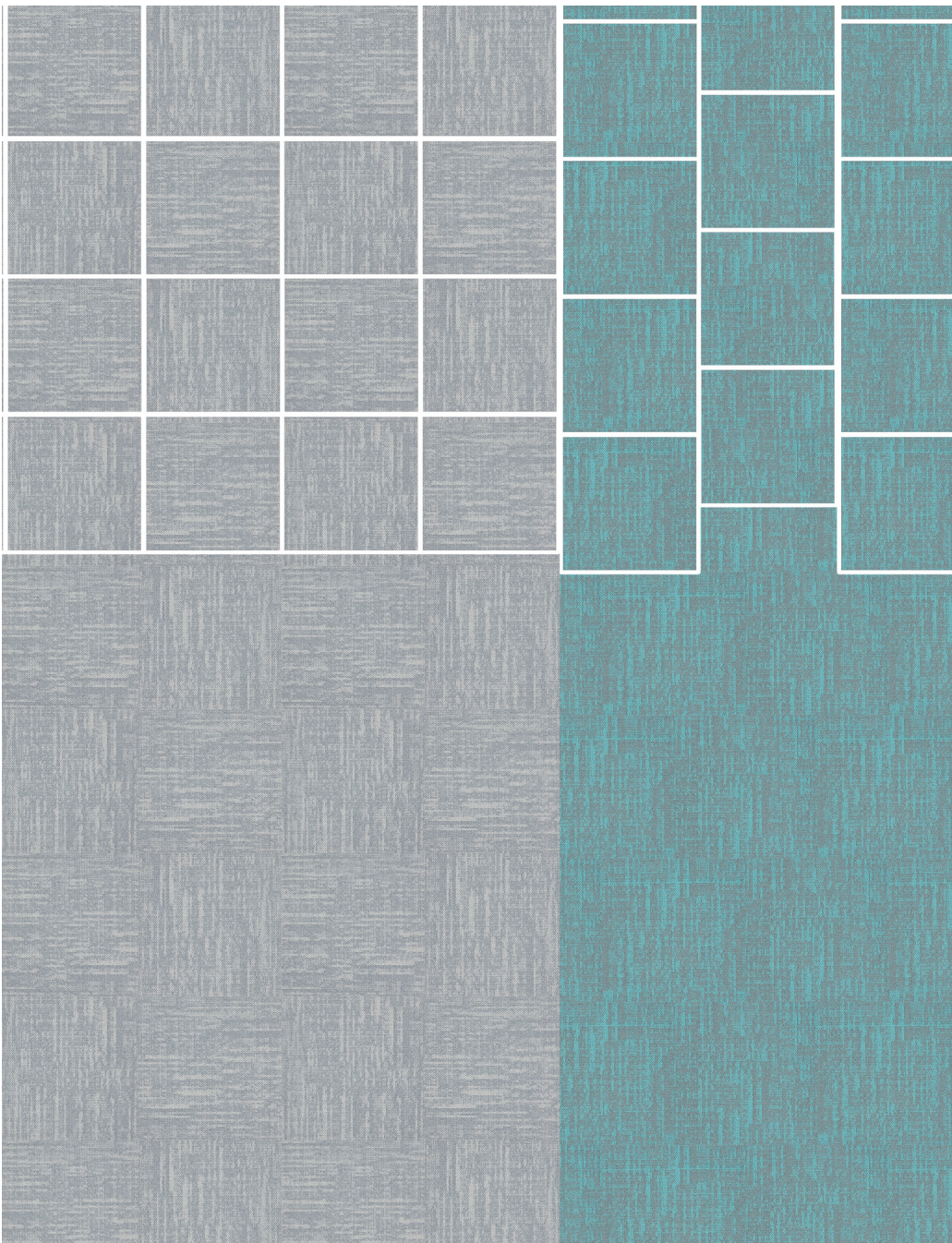
Grid CORAL 631034015 Tile 50 x 50 cm Vertical Ashlar Installation



QUATER
TURN

VERTICAL
ASHLAR

HERRING
BONE



Grid CLAY 631034001 Tile 50 x 50 cm Vertical Ashlar installation
Granite CYAN 631044022 Tile 50 x 50 cm Quarter Turn Installation

Mix & Match

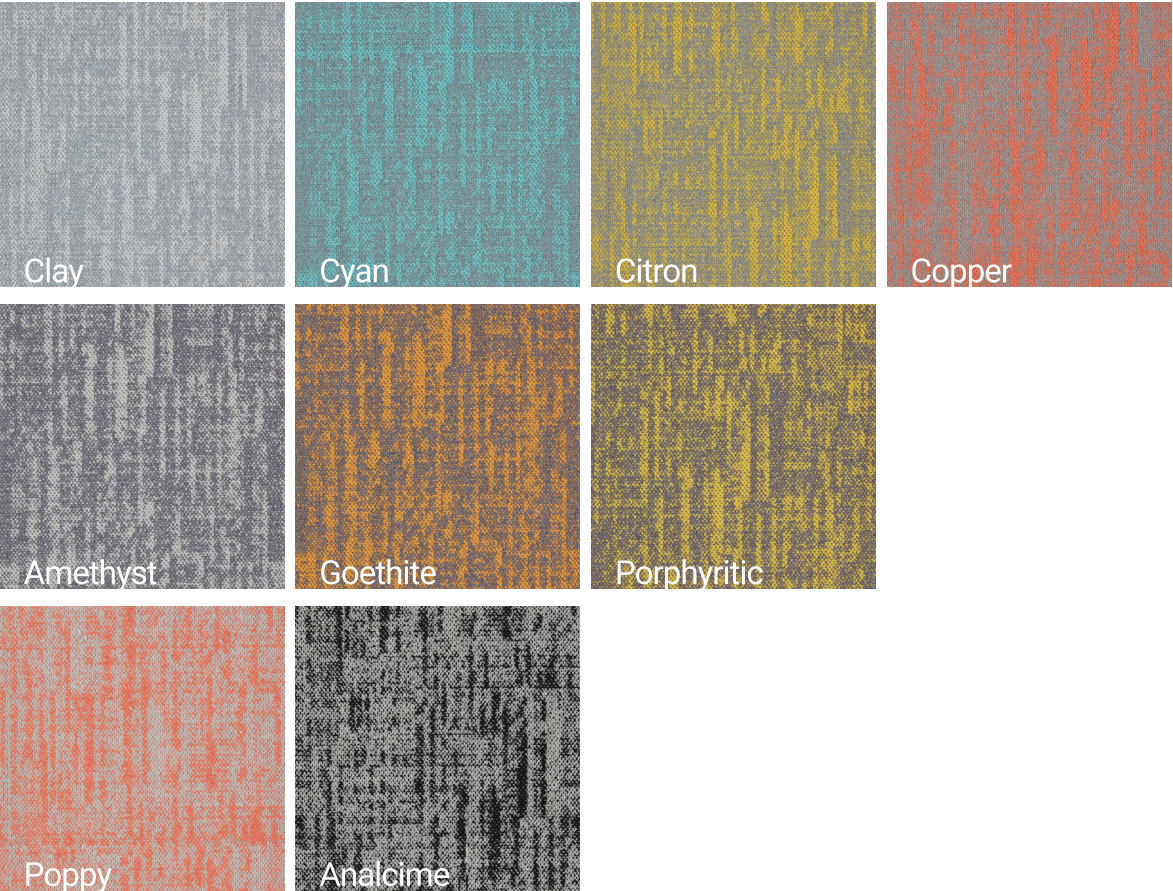
To support the variety of spaces throughout a floorplan, Geologic Structure's color palette has been developed with complementary tones that can be mixed and matched together.

Matching yarns have been used across a selection of colours of Geologic Structure series to allow specifiers combine more effectively the two different patterns, Grid and Granite, and the range of colours.

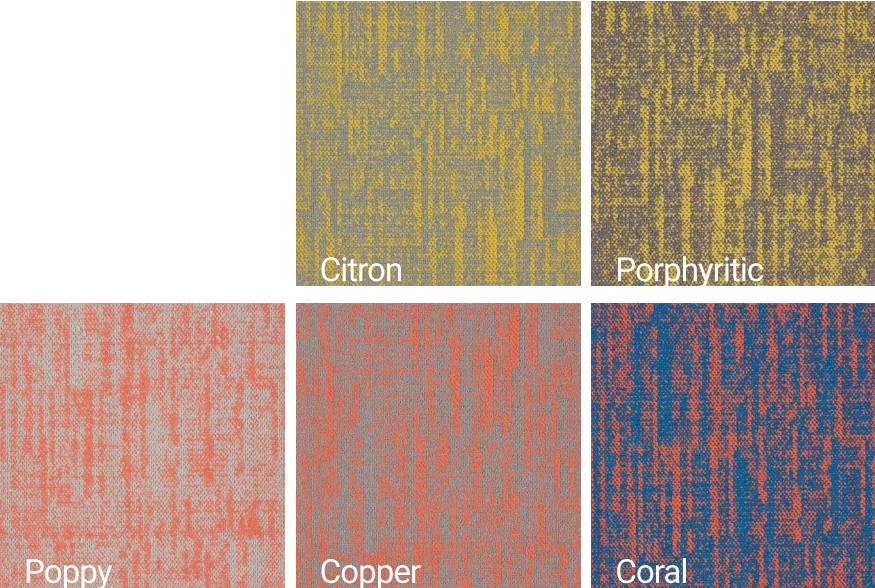
Designers can for example, select Clay as the main carpet and inject bold accent shades with Cyan, Citron or Copper, sharing the same base colour. That enable to bring interesting interjections of colours in a large layout.

Geologic Structure offers affordable excellence and endless creative scope for commercial interiors.

Same base color



Same top color



Grid



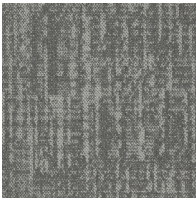
Clay 001



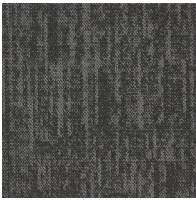
Loam 002



Rootsoil 003



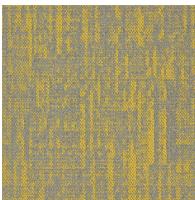
Augen 004



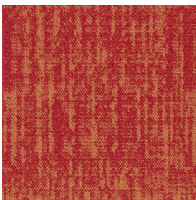
Flint 005



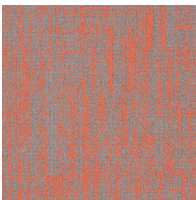
Lunar 006



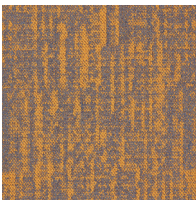
Citron 007



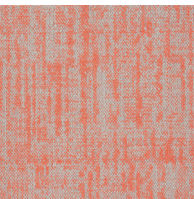
Flaming 008



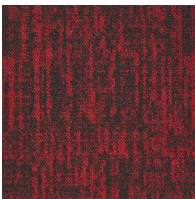
Copper 009



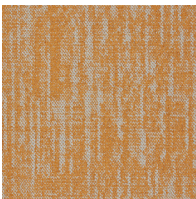
Goethite 010



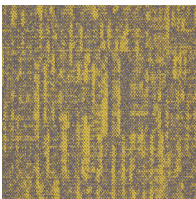
Poppy 011



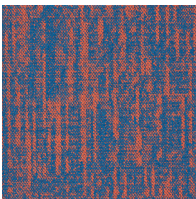
Hematite 012



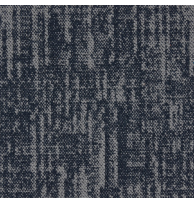
Ochre 013



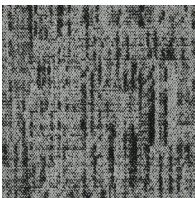
Porphyritic 014



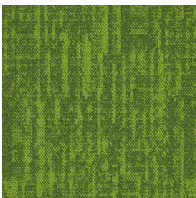
Coral 015



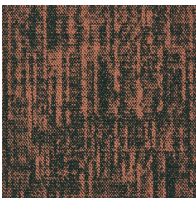
Cobalt 016



Analcime 017



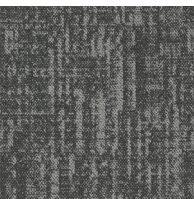
Emerald 018



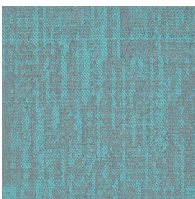
Shell 019



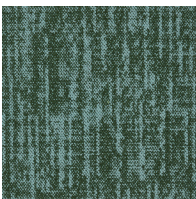
Amethyst 020



Flagstone 021



Cyan 022



Verdigris 023

Granite



Clay 001



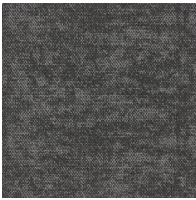
Loam 002



Rootsoil 003



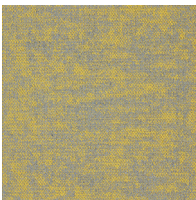
Augen 004



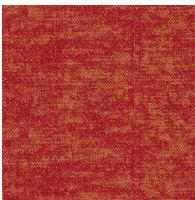
Flint 005



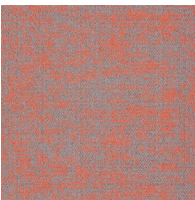
Lunar 006



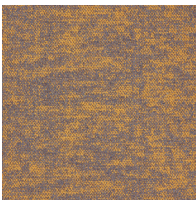
Citron 007



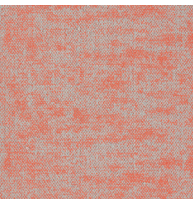
Flaming 008



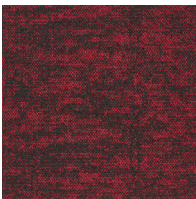
Copper 009



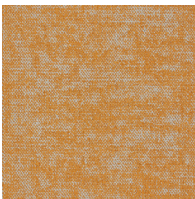
Goethite 010



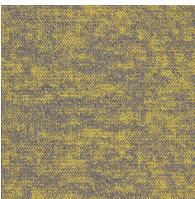
Poppy 011



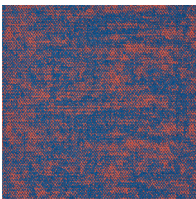
Hematite 012



Ochre 013



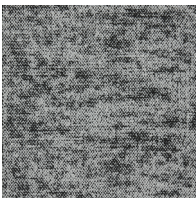
Porphyritic 014



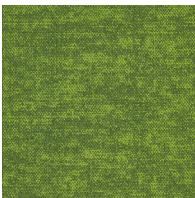
Coral 015



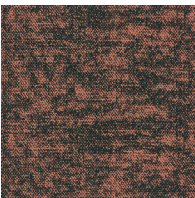
Cobalt 016



Analcime 017



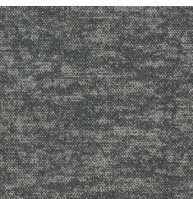
Emerald 018



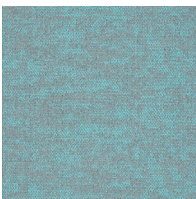
Shell 019



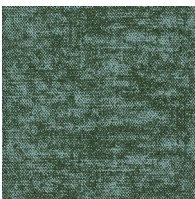
Amethyst 020



Flagstone 021

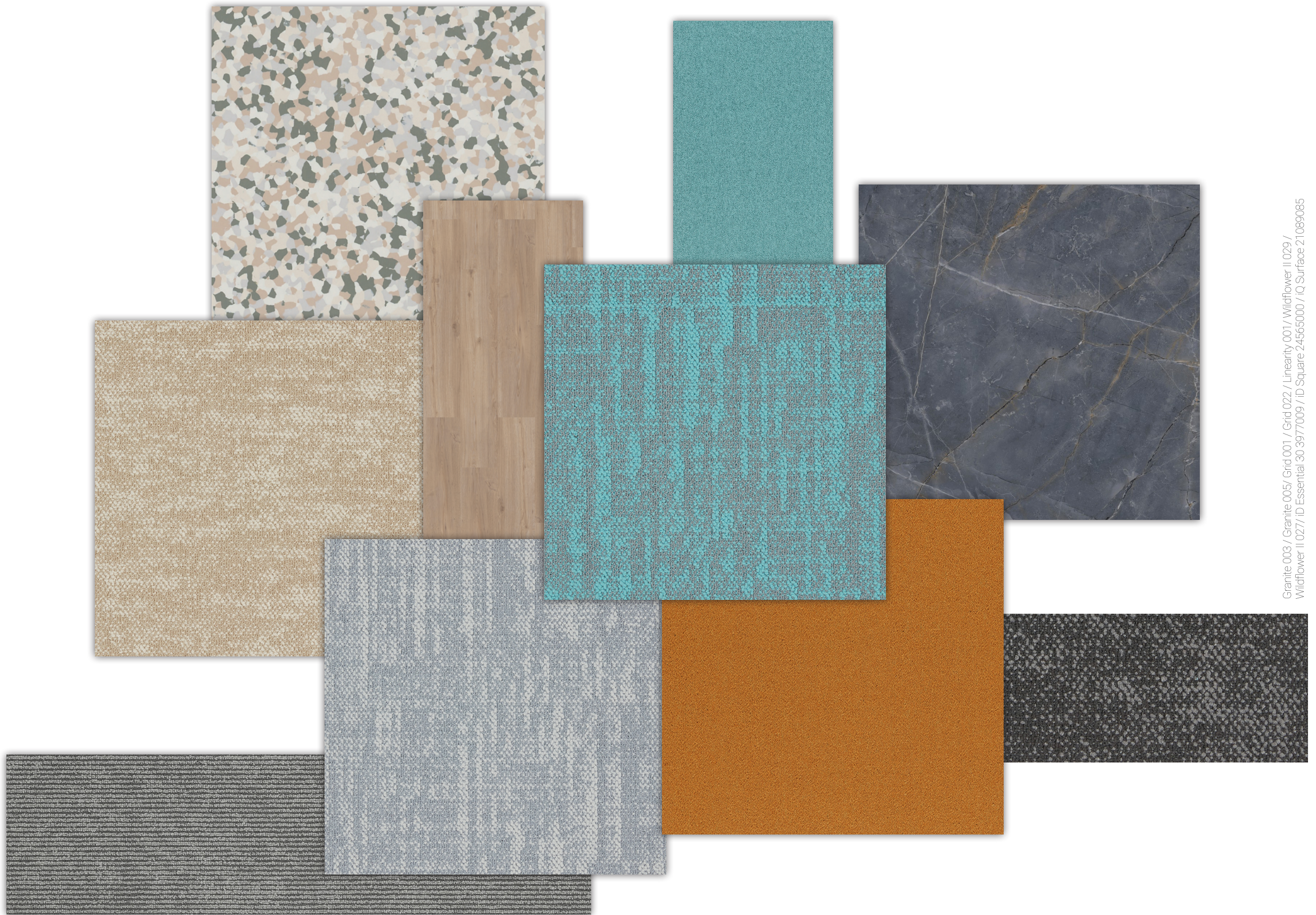


Cyan 022



Verdigris 023

No one covers you better.



Granite 003 / Granite 005/ Grid 001 / Grid 022 / Linearity 001 / Wildflower II 029 /
Wildflower II 027/ ID Essential 30 3977009 / ID Square 24565000 / IQ Surface 21089085

Committed to quality

VOCs and Air Quality

We share your responsibility to protect air quality in new office environments: all our Tanus modular carpets have the Green Label Plus certification which result from our exhaustive efforts to eliminate harmful VOCs in our product design and manufacturing process. Our Tandus modular carpet with PVC backing is also 100% phthalate-free.

Antimicrobials

Tandus modular carpet is designed to deliver maximum protection against mold and mildew without the use of hazardous antimicrobial pesticides, which can be inhaled and create adverse health effects. Using antimicrobial treatment on the carpet will only be temporary and will favor the bacteria resistance in the middle and long term, which is a major public health threat. We guarantee a 15-year warranty product without relying on unnecessary chemicals.

Stain Resistance

Our carpet benefits from Eco-Ensure technology: a fluorine-free and PFAS – free soil protection to avoid any stains on the carpet. In addition, we recommend to follow the maintenance instructions of our carpet tiles and to clean as soon as possible any stains..

Fire Safety

All Tandus modular carpet are tested in independent and certified laboratory to meet Class 1 rating on flammability.

Recycled Content

We have partnered with third party company to recycle empty wine bottles into our Ecobond Backing. Up to 60% of the Ecobond secondary backing is made of recycled materials. In some Tandus collections, we use the ECONYL® yarn which is made from 100% regenerated nylon including discarded fishing nets. Tarkett supports the Healthy Seas initiative that aims to remove waste from the sea, in particular fishing nets and recycling them into regenerated yarn.

LEED and WELL

As part of a sustainable, people-friendly solution, our Tandus modular carpet can contribute to both promoting workplace productivity and satisfaction, and achieving sustainable building standards including LEED and WELL:

- Green Label Plus certificate & low TVOC reports for Good Indoor Air quality
- Acoustic report to show how it can contracture to noise reduction
- 100% recyclable carpet tiles
- Recycled Content of Ecobond backing in the framework of our circular economy model
- Tarkett engagement on U.N. Global Compact
- Made in Asia products to limit impact on the environment
- Use of ECONYL® Yarn for some collections, a yarn made from 100% regenerated nylon including discarded fishing nets.



Please find more information on our sustainable initiatives on:
https://www.tarkett-asia.com/en_RA/sustainability



Grid CORAL 631034015 Tile 50 x 50 cm Vertical Ashlar Installation
iD inspiration Loose-Lay ELEGANT OAK BEIGE 24640014 Plank 121.9x22.9 cm Vertical Ashlar Installation

Geologic Structure: Grid & Granite

PRODUCT SPECIFICATION SHEET

Face Construction	Metric	Imperial	Procedure
Construction	Patterned Texture		
Fiber system	100% Nylon		
Dye Method	Solution Dyed		
Gauge	47.2 rows/10 cm	1/12	
Stitches per inch	46.0 stitches/10 cm	11.7 stitches/inch	ASTM D-418
Pile Height Average	4.0 mm	0.16 inch	ASTM D-418
Density Factor	247.5 kg/m³ (Grid)	6,688 oz/yd³ (Grid)	UM44D
	240.4 kg/m³ (Granite)	6,497 oz/yd³ (Granite)	
Total Product Weight	3,843 g/m² ±5% (Grid)	113.4 oz/yd² ±5% (Grid)	
	3,826 g/m² ±5% (Granite)	112.9 oz/yd² ±5% (Granite)	
Product Testing Information			
Indoor Air Quality	Comply with CRI Green Label Plus Standards		
	ID: #GLP5288.		
	Passes GB 18587-2001		
	Passes CPSC FF 1-70		
Surface Flammability	Class I (Mean average CRF: 0.45 watts/cm² or higher)		
Flooring Radiant Panel	ASTM E-648		
Electrostatic Propensity	3.0 kV or lower		
Colourfastness to Light	AATCC 134		
	≥ 4 after 100 hours		
	AATCC 16E		
Backing System			
Standard Backing	Tandus ECOPLY™ PVC Backing		
Backing Customization Option	Tandus ECOBOND™ PVC Backing		
Recycled Content	Tandus ECOBOND™ contains a minimum of 35% overall recycled content		
Recycling	100% recyclable when recovered		
Standard Product Size	500 mm x 500 mm; 250mm x 1000mm		
Special Product Size	667mm x 667mm; 1000mm x 1000mm; 500mm x 1000mm		

- Product Notes
1. Product specifications are derived from averages resulting from normal manufacturing tolerances in yarn, fiber, temperature, humidity and colour. Product specifications may vary within normal industry and standardised testing tolerances.
 2. These specifications reflect mean averages based upon tests of production runs of this carpet style by independent laboratories. A range of variances is implicit in the testing process. Furthermore, the standard test methods established to derive the specifications lack a degree of precision and repeatability; therefore, individual test results on the actual carpet purchased may differ from the specifications above.
 3. Colours may vary slightly from dye lot to dye lot.
 4. Backing or other materials may be changed without prior notice when shortages occur or when technological advancements become available which provide for improvement of the product's performance.



QUATER
TURN



VERTICAL
ASHLAR



HERRING
BONE















